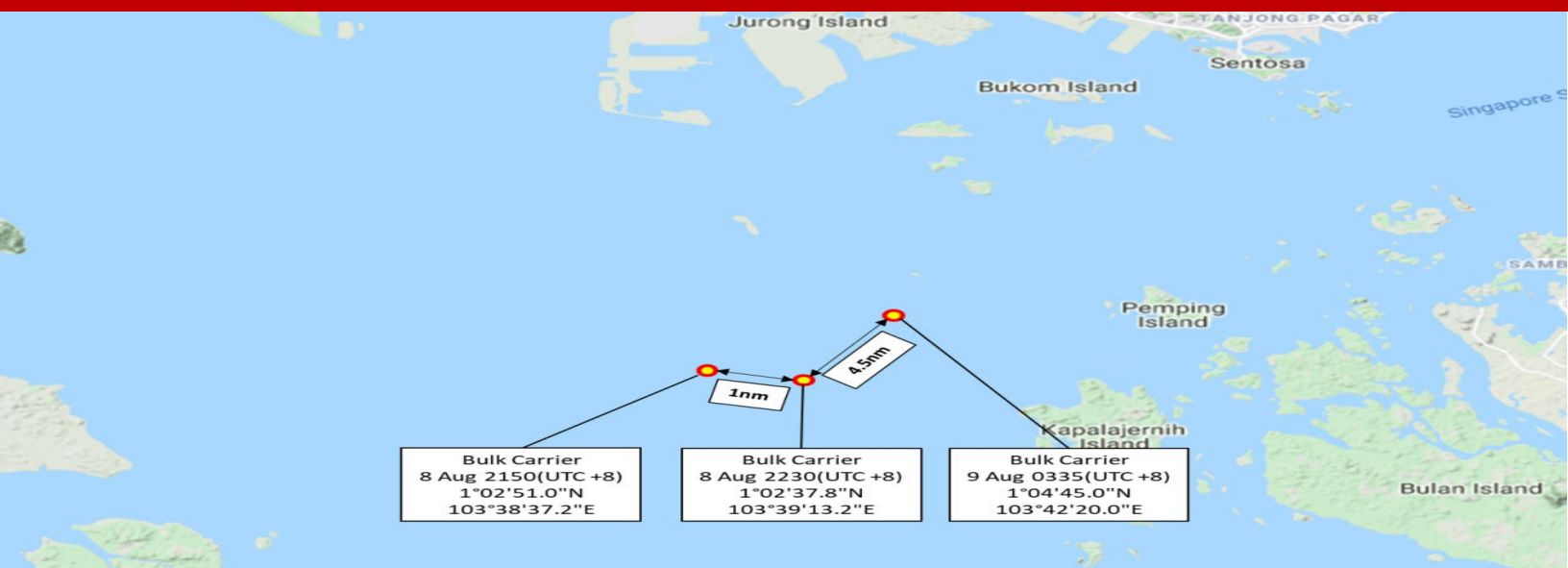
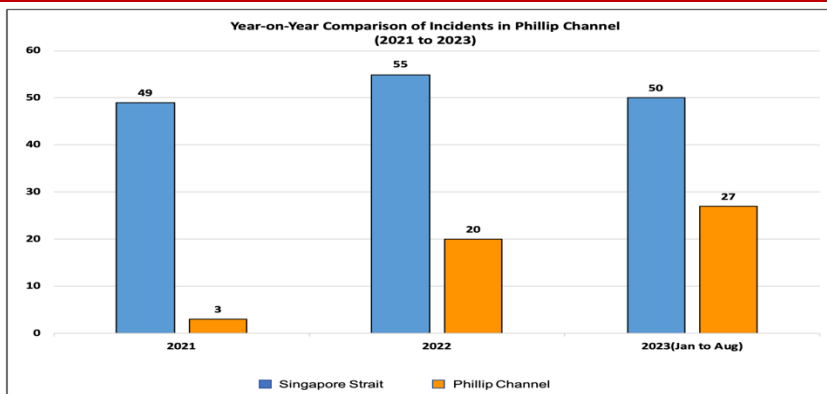


Phillip Channel, Singapore Strait - 3 TRAPS Incidents In One Night

Number and Location of Incidents (8 and 9 Aug 2023)



Key Observations and Assessments



- Summary of incidents.** Three incidents occurred in the Philip Channel between 2150H (8 Aug) and 0335H (9 Aug). The moon phase during this period makes it difficult to spot suspicious activities. Based on proximity of incident locations, time intervals, and number of perpetrators observed (3 to 4 pax), it is likely that the same group of perpetrators were involved in all three incidents.
- Overview of incidents in Philip Channel since Jan 2023.** Phillip Channel remains the main area of concern in the Singapore Strait since Q4 2022. Of the 50 incidents recorded in 2023 thus far, 27 incidents occurred in Phillip Channel, where vessels typically slow down significantly when turning. Enforcement is also challenging in the Philip Channel due to wide area, busy traffic, and fishing activity.
- Key Observations and Assessments.** Continued slow economic recovery in the region, unfavourable sea conditions due to SW Monsoon causing fishermen to stay near the coast and affecting fishing yields, likely caused locals to resort to petty crime to supplement their income.
 - Consistent with past trending, perpetrators continue to target vulnerable vessel types with slow transit speed (7 to 12 knots) and low freeboard (up to 7m).
 - Based on incident reports, perpetrators' modus operandi remains largely consistent with petty crime, and are opportunistic nature. Of the three incidents, only one involved confrontation.
 - IFC assesses that perpetrators have good knowledge of local waters and will continue to blend in with the traffic under the cover of darkness, and board when opportune.
- Outlook for Aug 2023.** Based on projected moon phase in Aug 2023, we should expect perpetrators to continue opportunistic boarding attempts from 10 to 20 Aug, due to minimal moon illumination, in order to avoid detection. IFC will continue to info-share, and work with regional authorities to step up enforcement efforts in the Phillip Channel. Notwithstanding, all vessels should step up preventive measures when transiting the Philip channel.

Recommended Actions for All Transiting Vessels

- Heighten vigilance, particularly when transiting the Phillip Channel in hours of darkness.** Upon sighting of suspicious activities or perpetrators onboard, immediately report to local authorities and inform the IFC; do not confront perpetrators. Prompt reporting can help prevent subsequent attacks on other transiting vessels
- Adopt Ship Protection Measures recommended in the Regional Guide 2 to Counter Piracy and Armed Robbery Against Ships in Asia, e.g., (1) turn on weather deck lighting around the accommodation block and rear facing lighting on the poop deck, (2) maintain an all-round lookout at an elevated position with focus on suspicious small craft(s) approaching or in proximity to the ship's aft, and (3) sound ship's alarm when suspicious small craft(s) sighted.
- To guard against successive boarding attempts by perpetrators, transiting vessels are encouraged to participate in Voluntary Community Reporting as depicted in 4th Edition MARSEC Charts Q6112 and Q6113.