



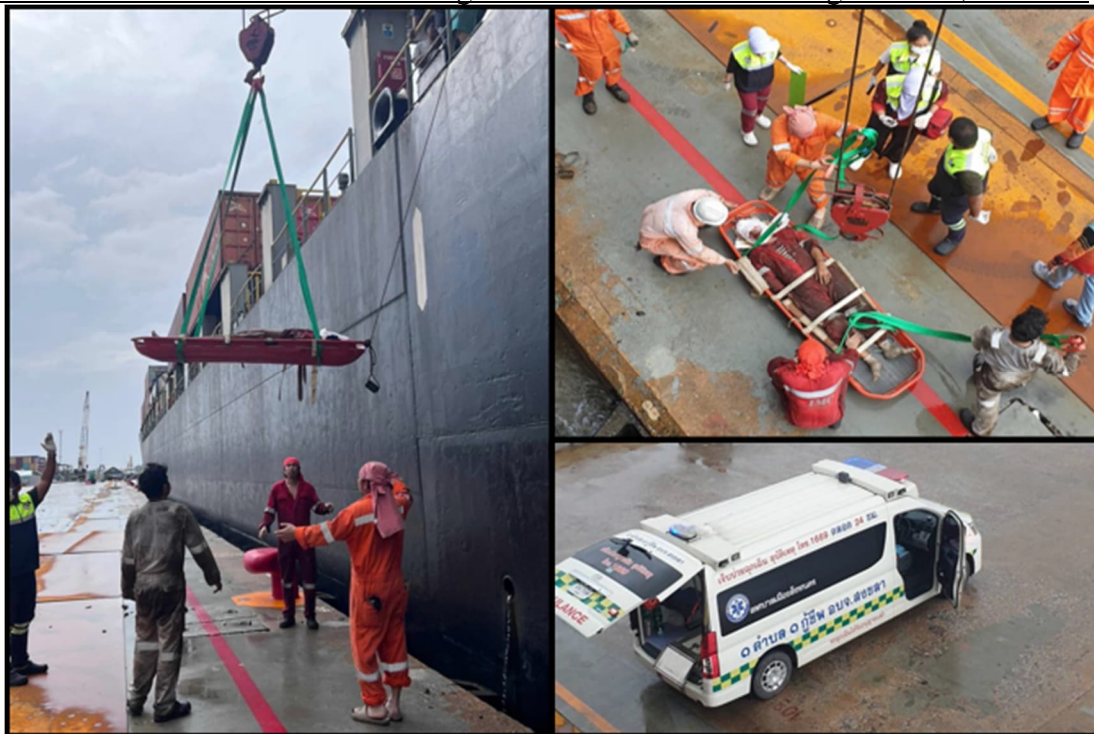
# INFORMATION FUSION CENTRE

25 Nov 2025

## IFC OPS FEATURE 04/25 – THAI AUTHORITIES COORDINATE SUCCESSFUL MEDICAL EVACUATION AT SONGKHLA PORT, THAILAND

1. On 25 Nov 25 1820H, the IFC received a request for assistance from a partner Company Security Officer (CSO), whose Container Vessel was berthed in Songkhla Port, Thailand. A crew member had sustained serious injury and required immediate medical assistance; however, the current floods limited access in/out of Songkhla Port.
2. The IFC immediately shared the info with our partners from the Royal Thai Navy (RTN) and continued to facilitate info-exchange as required. At 1923H, the local Thai medical agencies managed to evacuate the injured crew member from the Container Vessel and transported him safely to the hospital for medical treatment.

Photos: Thai Authorities Conducting Medical Evacuation at Songkhla Port, Thailand



3. The IFC would like to acknowledge the RTN and local Thai authorities for their professionalism and prompt response despite challenging conditions, resulting in the safe evacuation of the injured crew. The IFC continues to stand

ready to support our shipping partners and facilitate swift operational responses anywhere in the world.

4. Together we can ensure Safe and Secure Seas for All!