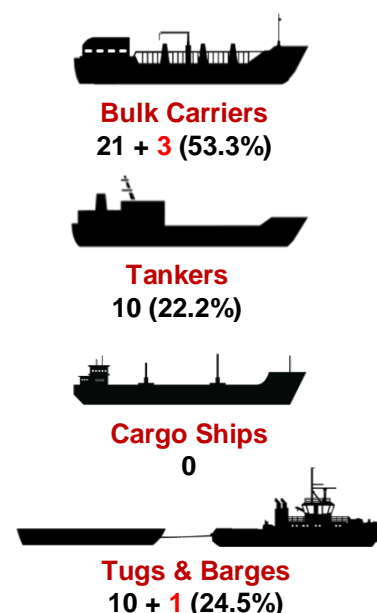
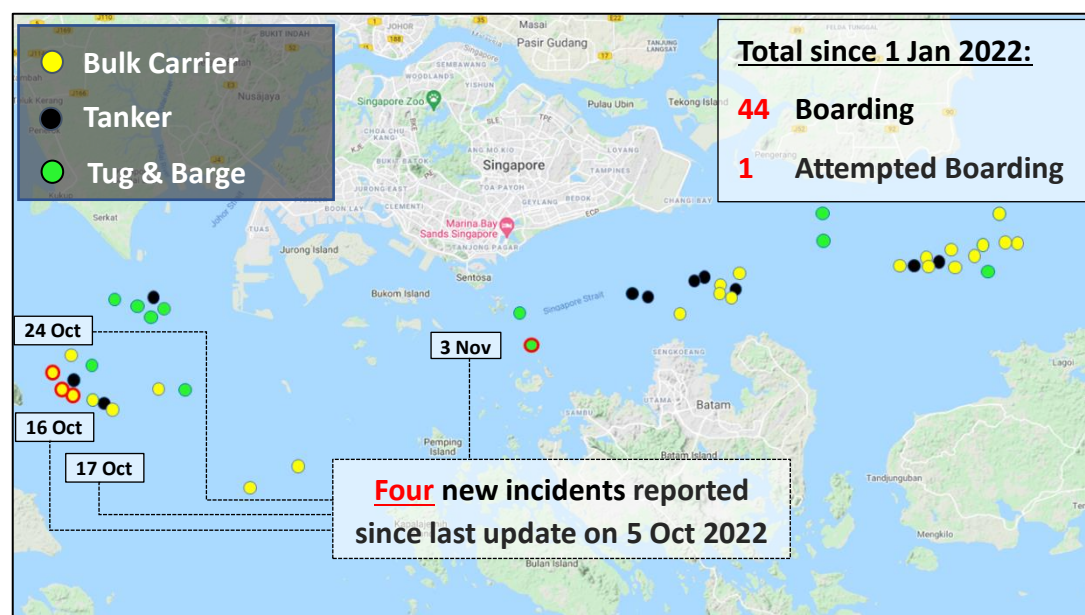


Summary of Boarding and Attempted Boarding Incidents in the Singapore Strait (corrected as of 8 Nov 2022)

Number of Incidents & Vessel Types



Key Observations and Assessments

- Of the four new incidents, three occurred in Phillip Channel, and one occurred in the Eastbound Lane of the Traffic Separation Scheme (TSS), within the Singapore Strait. Of note, the three incidents in Phillip Channel in Oct 2022, is the highest number of incidents in Phillip Channel recorded within a month since Jan 2022.
- In all of the incidents, the perpetrators were not armed, and there was no confrontation and injury reported. Of note, one incident reported items stolen.
- Two incidents (16 and 17 Oct 2022) occurred within 2 hours and 1nm apart from each other; assessed likely to be conducted by the same group of perpetrators due to similar group size (3 perpetrators), proximity of location, and time between incidents.

Modus Operandi: Remains Largely Consistent With Petty Crime

- Based on the incident reports this year, in most cases, the perpetrators avoided confrontation, and fled immediately upon being sighted by crew.
- Perpetrators are usually unarmed, and in group of average 4-6 pax, and they use small boats to target slow-moving vessels (7-12 knots) with low freeboard.

Cargo Ships, Bulk Carriers & Tankers	Tugs & Barges
<ul style="list-style-type: none"><u>May</u> be armed and confrontational e.g., small arms, knives, and steel bars (Out of 45 incidents since Jan 2022, 13 reported armed and 3 reported with confrontation)Usually target ship's engine parts and storesSame group of perpetrators may target few vessels in succession, in same night	<ul style="list-style-type: none">Usually unarmedUsually target scrap metalCould be targeted in both daylight and hours of darkness

Recommended Actions for All Transiting Vessels

- Remain vigilant, particularly when transiting the areas of concern in the Phillip Channel, and off Bintan and Batam
- Adopt Ship Protection Measures recommended in the Regional Guide 2 to Counter Piracy and Armed Robbery Against Ships in Asia, e.g., (1) turn on weather deck lighting around the accommodation block and rear facing lighting on the poop deck, (2) maintain an all-round lookout at an elevated position with focus on suspicious small craft(s) approaching or in proximity to the ship's aft, and (3) sound ship's alarm when suspicious small craft(s) sighted
- Participate in Voluntary Community Reporting as depicted in 4th Edition MARSEC Charts Q6112 and Q6113; upon sighting of suspicious activities, immediately report to local authorities and inform the IFC