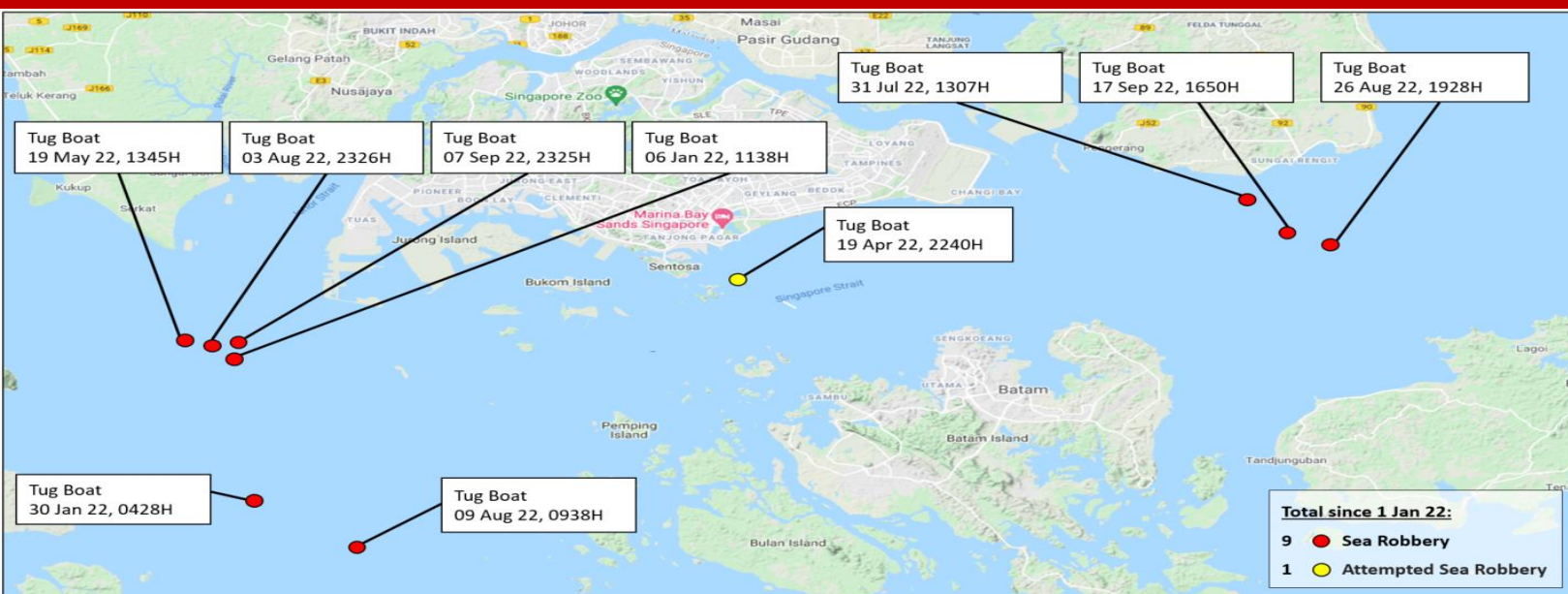
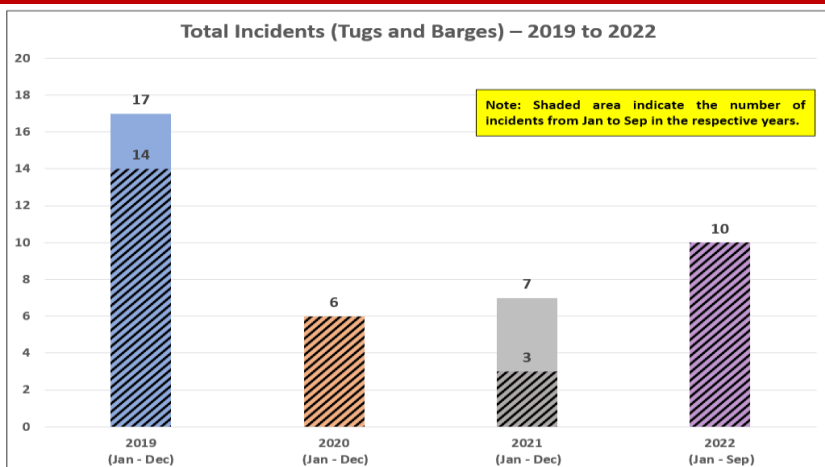


Uptick in Sea Robbery Incidents Involving Tugs and Barges in the Singapore Strait

Total Number and Location of Incidents (caa 28 Sep 22)



Key Observations and Assessments



- The **10** reported sea robbery incidents involving Tugs and Barges in the Singapore Strait (SS) thus far in 2022 is more than the total annual number of such incidents recorded in 2021; however, overall incident numbers (involving all vessel types) remains within similar range.
- The uptick is possibly a result of the combined effects of (1) resumption of related regional business after easing of COVID-19 restrictions, resulting in increased demand for scrap metal and Tug and Barge services; and (2) low freeboard and slow speed of Tugs and Barges, making them easier targets for opportunistic attacks.
- Based on past observations, we can expect opportunistic attacks on Tugs and Barges to continue in the upcoming months leading up to the festive period (particularly in Nov and Dec).

Modus Operandi: Remains Largely Consistent With Petty Crime

- Based on the incident reports, in most cases, perpetrators avoided confrontation, and fled immediately upon being sighted by crew.
- Incidents can occur in broad daylight (5 incidents) and in hours of darkness (5 incidents).
- Perpetrators usually (a) unarmed, (b) are in group of average 7-10 pax, (c) and target unaccompanied Tugs and Barges carrying scrap metal.

Recommended Actions for All Transiting Tugs and Barges

- Remain vigilant, particularly when transiting the areas of concern in the Phillip Channel, and off Bintan, Batam, and Tanjung Piai.
- Adopt Ship Protection Measures recommended in the Regional Guide 2 to Counter Piracy and Armed Robbery Against Ships in Asia. For Tugs and Barges in particular, consider (1) shining spotlight and/or sounding ship horn to deter potential perpetrators, (2) platform modifications for Tugs to make it more difficult for perpetrators to climb on board, and (3) transit in company (additional tug), if possible.
- Participate in Voluntary Community Reporting as depicted in 4th Edition MARSEC Charts Q6112 and Q6113. Upon sighting of suspicious activities, immediately report to local authorities and inform the IFC.