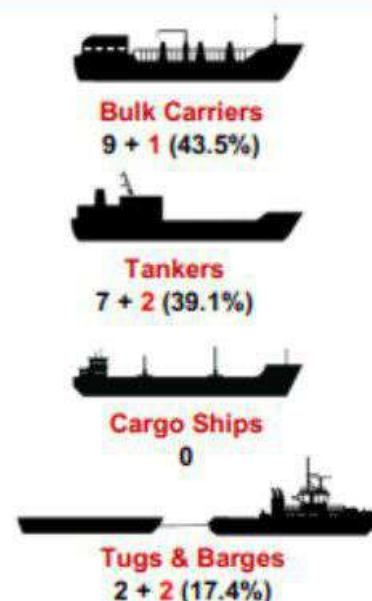
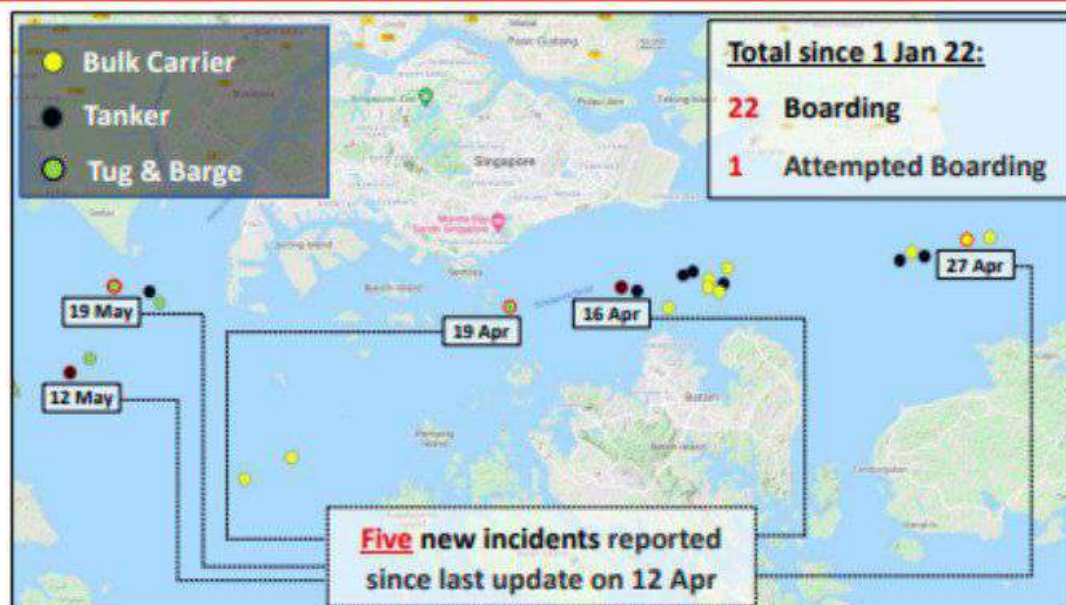


Summary of Boarding and Attempted Boarding Incidents in the Singapore Strait (caa 20 May 22)

Number of Incidents & Vessel Types



Key Observations

- The IFC recorded **five** new incidents since last update on 12 Apr; majority of the incidents occurred in the Eastbound Lane of Traffic Separation Scheme (TSS) within the Singapore Strait in hours of darkness
- Of note, one incident involving tug and barge occurred in the Westbound Lane of TSS; eight perpetrators and one crew (alleged conspired with the perpetrators) were arrested
- In most cases, there was (a) no confrontation, and perpetrators fled upon being sighted, and (b) no items reported stolen

Modus Operandi: Remains Largely Consistent With Petty Crime

- Based on the incident reports, in most cases, perpetrators attempted to board vessel from the aft, avoided confrontation, and fled immediately upon being sighted by crew
- Perpetrators usually (a) are in group of average 4-6 pax, and (b) use small boats, targeting slow-moving vessels (7-12 knots) with low freeboard

Cargo Ships, Bulk Carriers & Tankers	Tugs & Barges
<ul style="list-style-type: none"> <u>May</u> be armed and confrontational e.g., small arms, knives, and steel bars (Out of 23 incidents since Jan 2022, 8 reported armed and 3 reported with confrontation) Usually target ship's engine parts and stores Same group of perpetrators may target few vessels in succession, in same night 	<ul style="list-style-type: none"> <u>Usually</u> unarmed Usually target scrap metal

Recommended Actions for All Transiting Vessels

- Remain vigilant, particularly when transiting the areas of concern in the Phillip Channel, and off Bintan and Batam
- Adopt Ship Protection Measures recommended in the Regional Guide 2 to Counter Piracy and Armed Robbery Against Ships in Asia, e.g., (1) turn on weather deck lighting around the accommodation block and rear facing lighting on the poop deck, (2) maintain an all-round lookout at an elevated position with focus on suspicious small craft(s) approaching or in proximity to the ship's aft, and (3) sound ship's alarm when suspicious small craft(s) sighted
- Participate in Voluntary Community Reporting as depicted in 4th Edition MARSEC Charts Q6112 and Q6113; upon sighting of suspicious activities, immediately report to local authorities and inform the IFC

Contact IFC @ +65 6594 5705 / 9626 8965 or email us @information_fusion_centre@defence.gov.sg