



INFORMATION FUSION CENTRE

ANNUAL REPORT 2025

MARSEC OVERVIEW IN IFC'S AREA OF INTEREST

In 2025, the IFC recorded a total of 2,514 incidents, representing a 15% decrease compared to 2024 (2,960 incidents). This decline is primarily attributable to a significant reduction in incidents across the MARSEC categories of (a) Maritime Incidents (MI), (b) Illegal, Unreported, and Unregulated Fishing (IUUF), and (c) Environmental Security (ENVSEC).

THEFT, ROBBERY, AND PIRACY AT SEA (TRAPS)



Reported incidents in 2025: 143 (123 in 2024 over same period)

143

TOP 3 AREAS OF CONCERN (Number of Incidents)

2. Chattogram Anchorage Area, Bangladesh

1. Singapore Strait

3. Indonesian Anchorage Area (Jakarta, Kalimantan, Belawan)

TYPES OF VESSEL TARGETED



TYPES OF INCIDENT



136



6



1



0

OBSERVATIONS

The high TRAPS incident numbers in 2025 can be attributed to the combined effects of (a) global economic factors leading to increased cost of living and unemployment, and exacerbated by (b) challenging weather conditions affecting fishing yields, leading locals with requisite skillsets to resort to crimes at sea to make ends meet.

The IFC expects the number of TRAPS incidents in 2026 to remain high, unless more robust security measures are implemented both ashore and at sea. The Modus Operandi of perpetrators is expected to remain consistent with past trends, involving petty crimes that are non-confrontational and opportunistic in nature.

MARITIME INCIDENTS (MI)



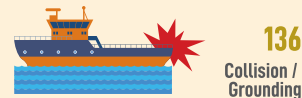
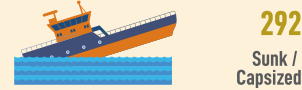
Reported incidents in 2025: 775 (1,020 in 2024 over same period)

775

TYPES OF VESSEL



TOP 3 TYPES OF INCIDENT



LOCATION OF INCIDENTS



OBSERVATIONS

In 2025, the IFC recorded fewer MIs than in 2024, largely attributable to a reduction in incidents in Indonesia.

The majority of recorded incidents involved small vessels sinkings or capsizings, which also accounted for the highest number of dead and missing persons.

The IFC expects MI numbers to remain high in 2026, driven by increased global maritime activity, and the growing unpredictability of weather patterns associated with climate change.

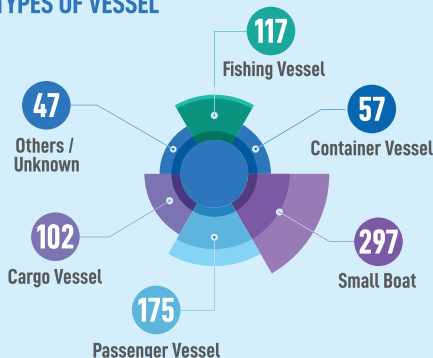
CONTRABAND SMUGGLING (CS)



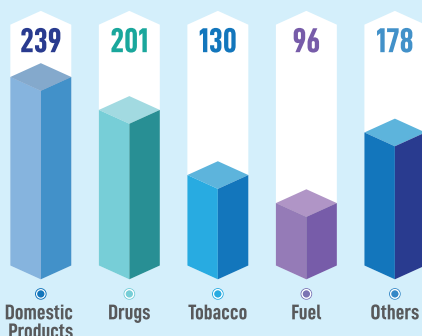
Reported incidents in 2025: 844 (872 in 2024 over same period)

844

TYPES OF VESSEL



TYPES OF CONTRABAND



OBSERVATIONS

Rising global costs in 2024 and 2025 may have driven locals to supplement incomes through illegal activities and black-market channels - CS incidents remained elevated for 2025 when compared with 2023. However, CS incidents in 2025 remains comparable to 2024, likely due to enhanced enforcement efforts.

The IFC expects that CS incidents will likely remain elevated in 2026, driven by persistent global economic uncertainty and ongoing political instability.



ILLEGAL, UNREGULATED, AND UNREPORTED FISHING (IUUF)

20%

Reported incidents in 2025:
(760 in 2024 over same period)

603

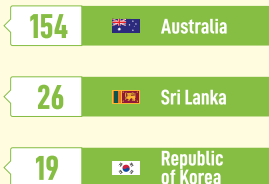
TOP 3 IUUF LOCATIONS



TOP 3 LOCAL LOCATIONS



TOP 3 POACHING LOCATIONS



OBSERVATIONS

In 2025, the IFC recorded fewer IUUF incidents than in 2024, likely attributable to intensified enforcement operations and enhanced cross-border coordination among regional agencies.

The IFC assesses that incident levels in 2026 will likely remain consistent with those observed in 2025; however, these levels are assessed to be highly sensitive to climatic and economic fluctuations.



IRREGULAR HUMAN MIGRATION (IHM)

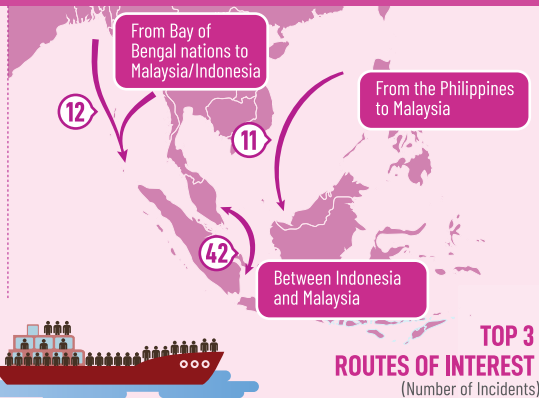
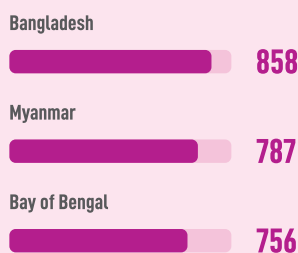
14%

Reported incidents in 2025:
(120 in 2024 over same period)

103

TOP 3 DEPARTURE LOCATIONS

(Number of Migrants)



OBSERVATIONS

In 2025, the IFC recorded fewer IHM incidents than in 2024, likely attributable to multiple factors, including changes in national policies, post-COVID economic stabilization, and strengthened enforcement measures, which collectively enhanced deterrence. However, the number of individuals involved in IHM increased by 26%, rising to 3,375 in 2025 from 2,683 in 2024.

The IFC expects that the number of IHM incidents in 2026 will likely remain similar to, or decrease slightly from, 2025 levels. Large-scale IHM ventures continue to be the primary driver of the total number of individuals involved, and such ventures are expected to persist into 2026.

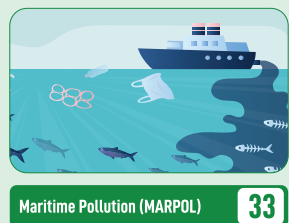
ENVIRONMENTAL SECURITY (ENVSEC)

37%

Reported incidents in 2025:
(56 in 2024 over same period)

35

TYPES OF INCIDENT



Others 1

TOP 3 LOCATIONS



OBSERVATIONS

In 2025, the IFC recorded fewer ENVSEC incidents than in 2024. Maritime Pollution remained the predominant incident category, driven largely by oil leakages, waste mismanagement, and accidental discharges from merchant vessels.

The IFC expects that ENVSEC incident levels in 2026 is likely to continue on a downward trend, supported by improved enforcement efforts and strengthened port waste management regulations across the region.

CYBER SECURITY (CYBSEC)

22%

Reported incidents in 2025:
(9 in 2024 over same period)

11

OBSERVATIONS

In 2025, CYBSEC incidents included the breakage of Underwater Telecommunications Cables, Malware Attacks on shipping infrastructure and the likely-deliberate degradation of critical navigation tools, including GPS and AIS network systems.

The IFC expects CYBSEC incidents to remain at similar levels or more in 2026, with a high level of unreported routine activity and occasional high-profile incidents.

MARITIME TERRORISM (MT)

Reported incidents in 2025:
(0 in 2024 over same period)

0

OBSERVATIONS

There has been no reported incidents since 2021, likely due to the ongoing enforcement effort by authorities.



Information Fusion Centre
Email: ifc_do@defence.gov.sg

Address: Changi Command and Control Centre, RSS Singapura - Changi Naval Base
+65 6594 5728 (Office Hours) +65 9626 8965 (24/7 Hotline)

www.ifc.org.sg https://bit.ly/WhatsApp_IFC @Info Fusion Ctr Information Fusion Centre

The Information Fusion Centre (IFC) serves as the regional Maritime Security (MARSEC) information-sharing hub covering most of the Indo-Pacific region. With a team of 26 International Liaison Officers from Navies / Coast Guards / Maritime Law Enforcement Agencies, and 163 worldwide MARSEC linkages, the IFC facilitates MARSEC information sharing and collaboration between its partners to cue operational responses. To get access to data trending and analysis in the IFC's Area of Interest, please visit our website for our products or IFC MARSEC interactive dashboard.



Scan for IFC links