

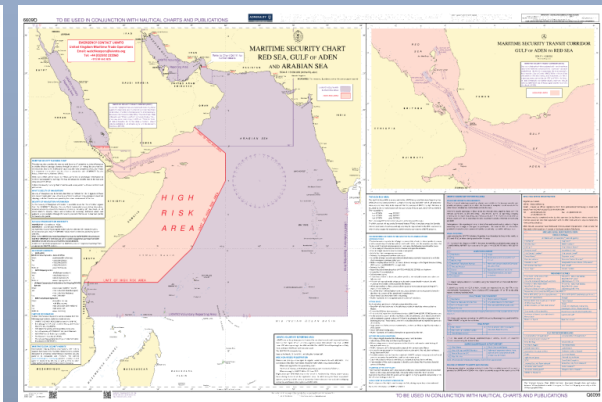
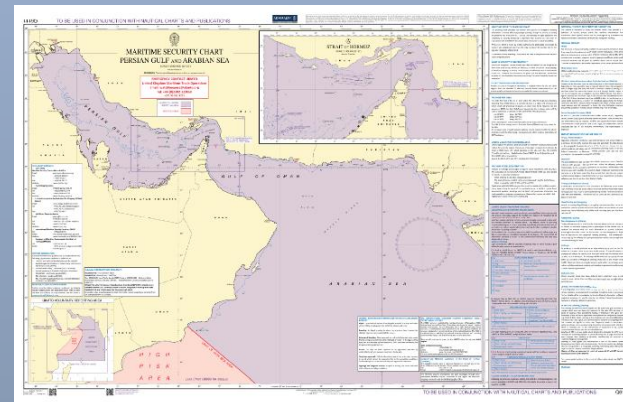
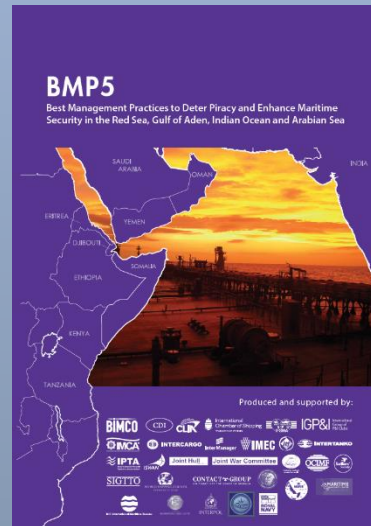
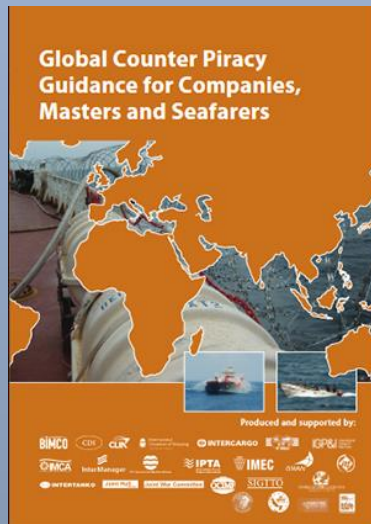
UK MARITIME TRADE OPERATIONS



OFFICIAL

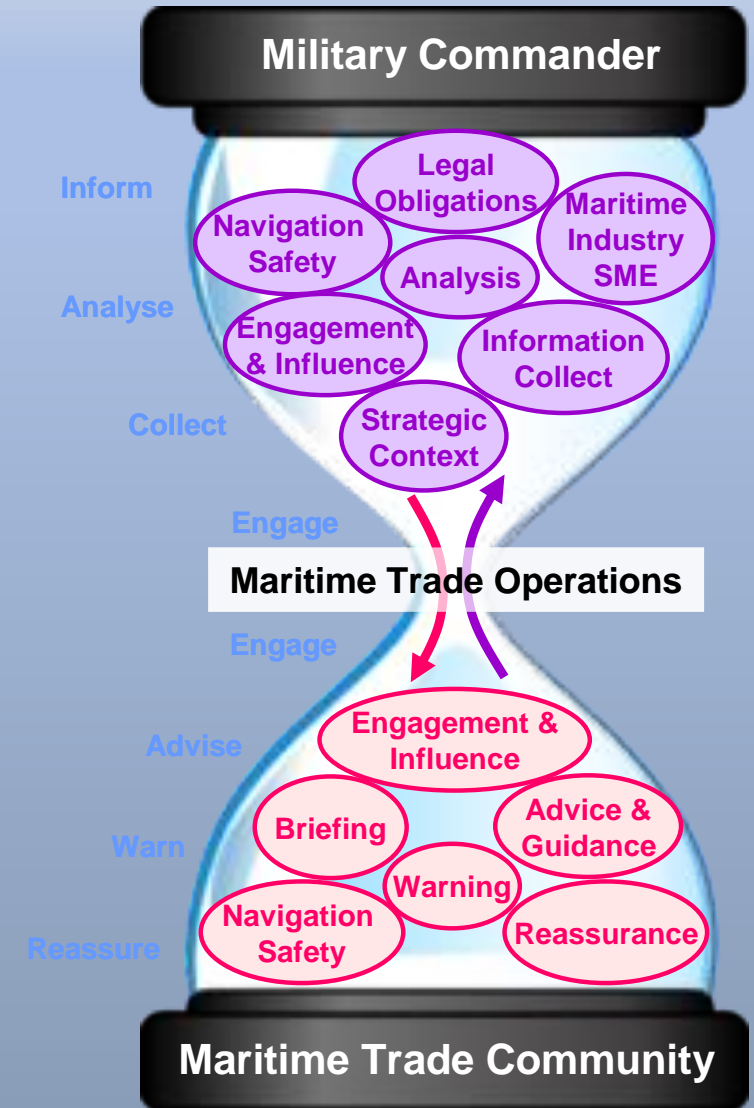
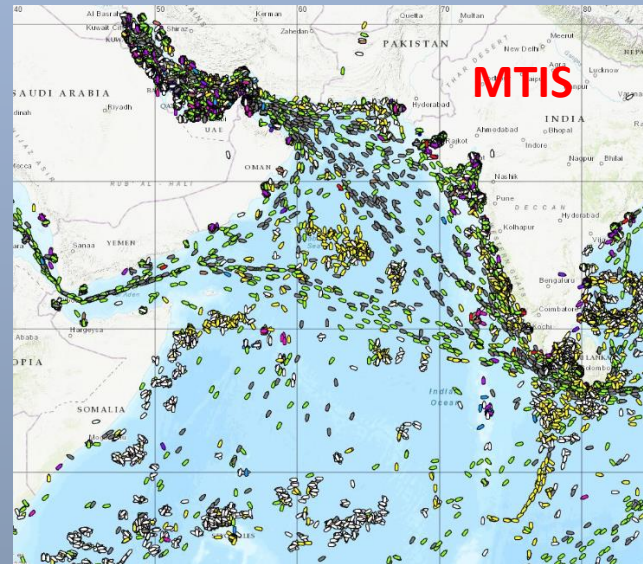
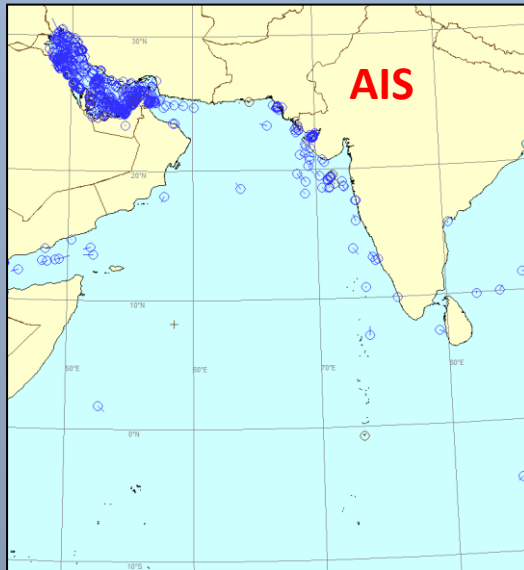
Operating Model

- A-National
- A-Commercial
- A-Political



Aim

- Provide timely maritime security information to Industry and responding organisations to enable informed decision making



ASSESSMENT OF MARITIME SECURITY EVENTS

This Guide should be used to help form a solution. Each incident is unique and needs its own response

THREAT

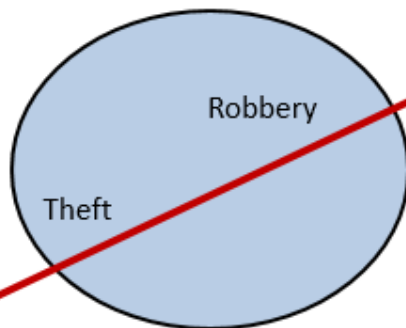
ADVISORY

IRREGULAR ACTIVITY / SIGHTING -

Issue Advisory Irregular Activity / Sighting

Irregular Activity/ Sighting

SOLAS – Report to Regional MRCC **Immediately**



Threat Threshold / Tripwire

WARNING – **SEE & AVOID**

Hijack

Kidnap

Boarding

Attack

Attempted Boarding

Suspicious Approach

| TERMS | DEFINITIONS |
|--|---|
| Theft | No Violence |
| Robbery | Threat / actual Violence to crew |
| Sightings / Irregular Behaviour | Suspicious activity not associated with the locality or prevailing conditions |
| Suspicious Approach | Definite alteration towards the vessel; rapid increase in speed which cannot be accounted for in the prevailing conditions. Sudden changes in course towards ship and aggressive behaviour |
| Attack | An aggressive approach by unidentified craft and weapons have been discharged |
| Attempted Boarding | Close approach or hull-to-hull contact with report that boarding paraphernalia were employed or visible in the approaching boat, but are thwarted by BMP measures, PAST, weather conditions, lack of appropriate equipment, etc |
| Boarding | Unauthorised persons have boarded the ship but have not taken control of the vessel |
| Hijack | Unauthorised persons have illegally boarded the ship and taken control of the vessel against the will of the Master and crew |
| Kidnap | Crew taken off vessel by force |

Theft / Robbery

Normally conducted in Harbours & Anchorages, Rivers & Estuaries or within TTW, whilst vessels are berthed, at anchor, drifting or alongside Off-shore facilities. Only timely notified incidents will result in an Advisory. Normally left for reporting in Weekly Reports.

RESPONSE / REPORTING / PRODUCT

UKMTO Summary Q2 2021

- 227,373 total emails received
- 5 Warnings & Advisories issued
- 101 other events (SOLAS/Medical/Breakdown)
- 5 exercises/drills
- 95% reporting rate

★ Non Piracy 001/04

★ Piracy (Sighting)

001/04



001/05



003/04



002/04



OFFICIAL

Information Sources

- Telephone
 - **24/7/365 Emergencies +44 2392 222 060**
 - UKMTO(D) +971 430 94268
- Website
 - www.ukmto.org
- Social Media
 - @UK_MTO
- Other References
 - Global Counter Piracy Measures, BMP 5 & BMP WA
 - UKHO Maritime Security Charts Q6099 and Q6111

